

# Office Space for Lease

15150 N Hayden Road | Suite D220 | Scottsdale Airpark



PRESENTED BY

www.shellcommercial.com

480.443.3992



FIBER OPTIC AVAILABLE

±1,768 SF OFFICE SPACE LOCATED IN THE SCOTTSDALE AIRPARK CORPORATE CENTER | EASY ACCESS TO LOOP 101

FOR MORE INFORMATION, PRICING OR TO SCHEDULE A SHOWING CONTACT



**JOHN QUATRINI**, Associate Broker  
C 602.859.0506  
john@shellcommercial.com



**SUZANNE ENRIGHT**, Senior Associate  
C 602.471.2981  
suzanne@shellcommercial.com

PROPERTY OWNED  
& MANAGED BY:



- Stable and flexible property owner in Phoenix/Tucson metro, since 1992, with office and industrial properties totaling over 9.1 million square feet.
- Local Ownership with in-house property management professionals to service our customers.
- Move-in ready suites available for immediate delivery.
- Efficient lease negotiation process.

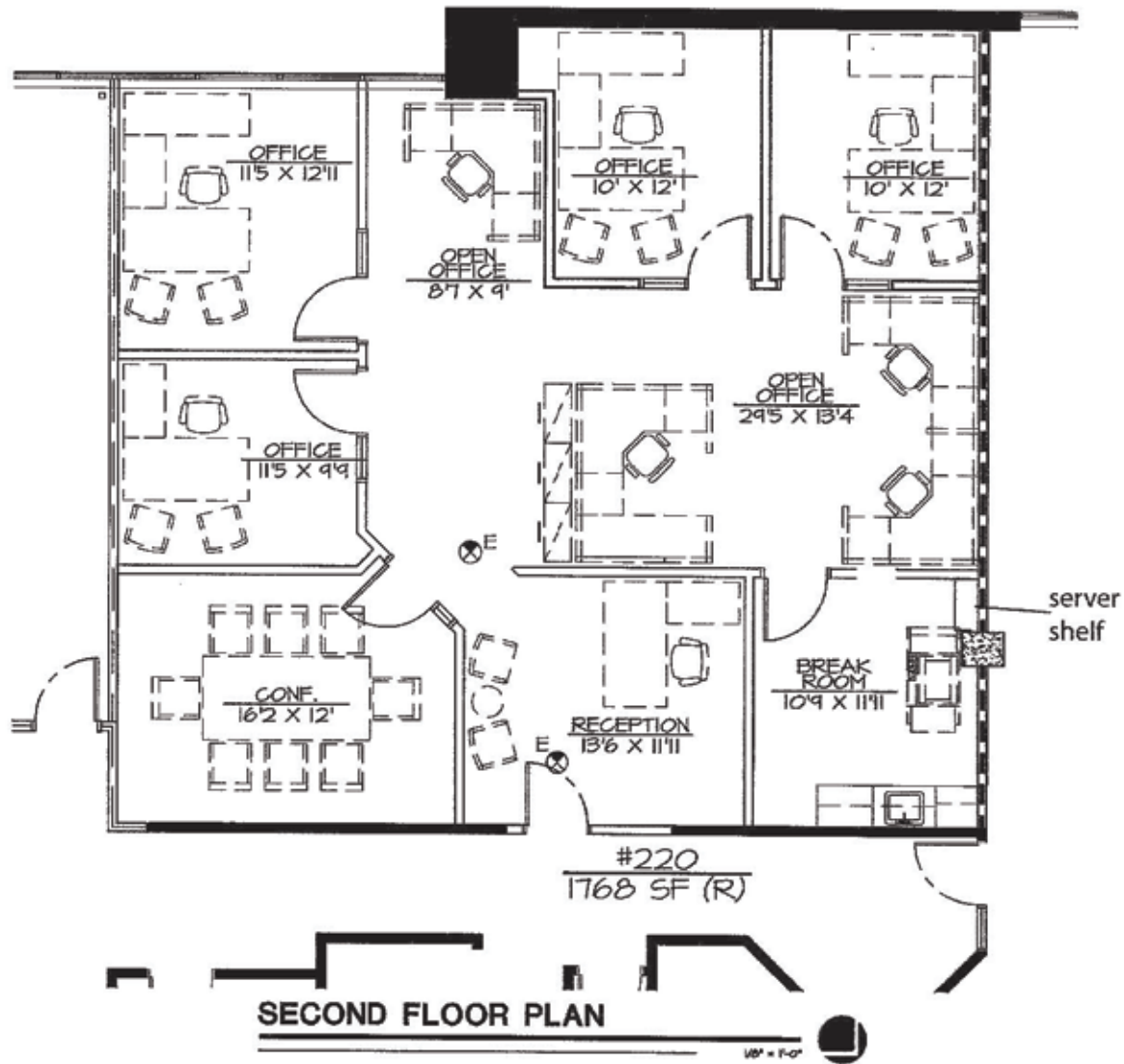
All information contained herein is subject to prior sales and leasing. This information has been secured from sources we believe to be reliable, but we make no representation or warranties, expressed or implied, as to the accuracy of this information.  
Shell Commercial | 16410 N 91st St. | Suite 112 | Scottsdale, AZ 85260

15150 N Hayden Road | Suite D220 | Scottsdale, AZ 85260





FLOOR PLAN ±1,768 SQ. FT.



## FEATURES

- Reception
- Four (4) Offices + Open Office
- Conference Room
- Break Room
- Cubicles Included or Removed

### NOT TO SCALE

information furnished regarding property for sale, rental or financing is from sources deemed reliable, but no warranty or representation is made as to the accuracy thereof and same is submitted to errors, omissions, change of price, rental or other conditions, prior to sale, lease or financing or withdrawal without notice. No liability of any kind is to be imposed on the broker herein. This information has been secured from sources deemed reliable, however, we make no warranties as to its accuracy.

15150 N Hayden Road | Suite D220 | Scottsdale, AZ 85260

